

آشنایی با پایگاه اطلاعاتی



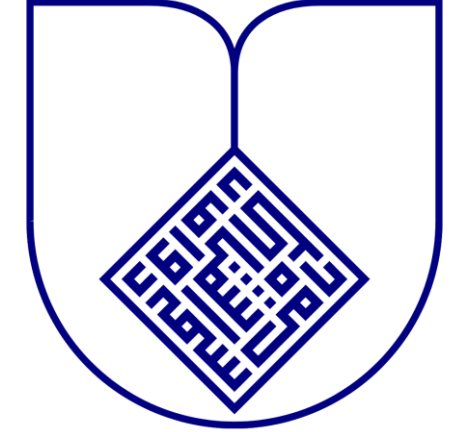
ELSEVIER

ClinicalKey®



ELSEVIER





با ارائه: خانم مریم پیروز کیا  
دانشجوی کارشناسی ارشد کتابداری و اطلاع رسانی پزشکی  
کتابدار بیمارستان امین اصفهان



- کلینیکال کی در ترجمه تحت الفظی به معنای کلید بالینی است.
- کلینیکال کی پایگاه قدرتمندی برای یافتن پاسخ های کلیدی بالینی برای کلیه افراد شاغل در حوزه پزشکی است.
- این پایگاه اطلاعاتی یکی از محصولات شرکت بین المللی Elsevier است که اطلاعات علمی، مستند، دقیق و سریع را برای تصمیم گیری پزشکان در سطح دنیا فراهم می آورد.



این پایگاه به گونه ای طراحی شده است که توان پاسخگویی به ۳ نیاز کلیدی پزشکان، **جامعیت**، **قابل اعتماد** و **سرعت در پاسخ گویی** را به صورت همزمان در خود داشته باشد.

➤ **جامعیت:** مجموعه ای از منابع بالینی که در مقایسه با سایر موتورهای جستجوی مشابه دربرگیرنده تمامی موضوعات پزشکی و جراحی است .

➤ **قابل اعتماد:** دارای محتوای معتبر و قابل اطمینان در حوزه پزشکی و جراحی است .

➤ **سرعت در پاسخگویی:** مرتبط ترین پاسخ ها را در سریع ترین زمان ممکن ارائه می کند .

➤ به منظور دسترسی به این پایگاه ابتدا وارد وب سایت کتابخانه دیجیتال دانشگاه علوم پزشکی اصفهان به آدرس <https://diglib.mui.ac.ir/fa> شوید.

➤ سپس بروی گزینه **دانش لینک** کلیک کنید.

➤ پس از ورود به سامانه دانش لینک قسمت پایگاه های اختصاصی را انتخاب کرده و سپس بروی گزینه **clinicalkey** کلیک میکنیم.

➤ توجه داشته باشید که برای استفاده از امکانات کتابخانه دیجیتال و دانش لینک حتماً میبایست از روشن بودن اکانت vpn خود مطمئن شوید.



The image shows a browser window displaying the MUI Digital Library website. The browser's address bar shows the URL `diglib.mui.ac.ir/fa`. The website's header includes a search bar and navigation links in Persian: "سوال‌ات متداول", "شهروندان", "دانش آموختگان", "کارکنان", "هیات علمی", and "دانشجویان". A secondary navigation bar contains "معرفی", "آیین نامه ها", "لیست پایگاه های اطلاعاتی", "محتوای آموزشی", "جستجو در کتابخانه", and "تماس با ما". The main content area features a large illustration with the text "Digital library" and "Discover. Explore. Learn." Below this, a section titled "Databases (پایگاه های اطلاعاتی)" lists six database providers: ANATOMY.TV, Daneshlink, Emerald Publishing, ERIC, IranDoc, and ISC. Each provider has a logo, name, and a "Help" link. An orange arrow labeled "1" points to the search bar in the header, and another orange arrow labeled "2" points to the "Daneshlink" database card.

کتابخانه دیجیتال | دانشگاه علوم پزشکی اصفهان

دانشجویان هیات علمی کارکنان دانش آموختگان شهروندان سوال‌ات متداول







معرفی آیین نامه ها لیست پایگاه های اطلاعاتی محتوای آموزشی جستجو در کتابخانه تماس با ما

کتابخانه دیجیتال

## Digital library

Discover. Explore. Learn.

### Databases (پایگاه های اطلاعاتی)

 ANATOMY.TV POWERED BY PRIMAL PICTURES	 Daneshlink	 Emerald PUBLISHING	 ERIC Institute of Education Sciences	 IranDoc	 ISC
Help	Help	Help	Help	Help	Help

Enter Title, DOI & Keyword(Only Latin Article)



کاربر گرامی لطفاً از به اشتراک گذاشتن نام کاربری یا دانلود بیش از حد از پایگاهها اجتناب نمایید در غیر اینصورت نام کاربری شما بلاک می گردد.

پایگاههای آنلاین عمومی

پایگاههای آنلاین استنادی

پایگاههای آنلاین اختصاصی



IEEE



ACS Publications



APS



ACS



IOP



ACM



ASCE



Reaxys

دسترسی 1 دسترسی 2



Heinonline



Pubmed



Ovid

ClinicalKey®

Clinicalkey

دسترسی 1 دسترسی 2



Elsevier



NEJM Knowledge+

دسترسی 1 دسترسی 2



Embase



Cochrane Library

برای مشاهده لیست کامل A-Z پایگاهها و دسترسی به آنها اینجا کلیک کنید

Search for conditions, treatments, drugs, books, journals, and more

All Types ^ Type your search

Search

All Types

Books

Journals

Clinical Overviews

Clinical Trials

Drug Monographs

Guidelines

Patient Education

Multimedia

Procedure Videos

Clinical Calculators

Clinical Focus

کتاب ها

مجلات

بررسی های بالینی

کارآزمایی های بالینی

اطلاعات دارویی

راهنماهای بالینی

آموزش به بیمار

چند رسانه ای

ویدئو ها

ماشین حساب

Calculators

Interactive tools to support clinical decisions

Guidelines

Latest clinical guidelines from leading organizations

کلینیکال کی برای جستجو شامل این ۱۲ قسمت می باشد

Info

Clini

Comp  
summ

Patie

Educa  
patier

Deepen your specialty and medical knowledge

Books

Browse our collection of reference

Journals

Browse our collection of journals

Procedure Videos

Watch videos that demonstrate

Multimedia

Image and video collection



- با انتخاب گزینه **BOOKS** میتوانید کلید واژه و یا نام کتاب مورد نظر خود را جستجو کنید.
- نتایج حاصل از جستجو را می توان بر اساس نوع منبع، نوع مطالعه، تخصص و تاریخ فیلتر کرد.
- نتایج حاصل از جستجو را می توان بر اساس میزان مرتبط بودن و تاریخ نشر مرتب کرد.
- با کلیک بروی هریک از نتایج بازیابی شده، جلد کتاب مورد نظر در سمت راست و سرفصل مطالب مهم کتاب در سمت چپ نمایش داده میشود.
- در این پایگاه امکان دانلود کتاب به صورت کامل وجود ندارد و تنها در صورت رجیستر و لاگین کردن در پایگاه امکان دانلود فصل هایی از برخی از کتاب ها را خواهید داشت .
- در قسمت بالای هر رکورد نیز امکان تبدیل متن کتاب به حالت مطالعه وجود دارد.

مرتب کردن نتایج جستجو بر اساس ارتباط یا تاریخ

## Multiple Sclerosis

Electrophoresis of cerebral spinal fluid (CSF) of a patient with multiple sclerosis (left), compared to the CSF of someone with no central nervous system inflammatory disease (right), shows three distinct, horizontal oligoclonal bands. Multiple sc...

Ferri's Clinical Advisor 2025

Choudhury, Natasha, MD; Balabanov, Roumen, MD. Published January 1, 2025. © 2025.

[See more results from this chapter](#)

## Neuromyelitis Optica

Multiple Sclerosis and Other Inflammatory Demyelinating Diseases of the Central Nervous System > Other Inflammatory Demyelinating Diseases of the Central Nervous System

Eugene Devic coined the phrase "neuromyelitis optica" (NMO) in the late 1800s to describe a devastating demyelinating syndrome characterized by ON and myelitis, either simultaneously or in sequential relapses. Despite Devic's and others' belief th...

Bradley and Daroff's Neurology in Clinical Practice

Fabian, Michelle T.; Krieger, Stephen C.; ...Show all. Published January 1, 2022. © 2022.

[See more results from this chapter](#)

## Multiple Sclerosis

Approved Immunomodulatory Therapy for Multiple Sclerosis Medication Dosing Side

یک بررسی کلی و سریع از موضوع مورد جستجو، مثل تعریف، تشخیص، درمان، پیشگیری و... در منابع کلینیکال کی

فیلتر کردن نتایج جستجو بر اساس: نوع منبع، نوع مطالعه، تخصص و تاریخ

Clear filters

Filter By:

Source Type:

Journal Articles 6971

Select an Option

Full Text Only

Full Text and MEDLINE

Meta-analyses 192

Randomized Control Trials 214

Narrative Reviews 1673

Clinical Trials 521

Images 484

Books 421

Guidelines 267

Show More

Specialties:

Advanced Basic Science 3

Allergy and Immunology 9

Anatomy 3

Anesthesia 22

## Multiple Sclerosis

Clinical Overview

View Full Topic

Elsevier Point of Care

Key Points

Multiple sclerosis is a chronic and often disabling disease that impairs the central nervous system; it is considered to be immune mediated

Can be relapsing-remitting (85% of patients) or progressive; pace of disease and rate of progression vary

Symptoms vary widely depending on location and severity of lesions; they include numbness or tingling, muscle weakness/spasticity, vision problems, fatigue, impaired balance or coordination, and bladder dysfunction

Diagnosis is based on clinical evidence (supplemented by paraclinical studies) that disease activity consistent with focal demyelination has affected 2 or more areas of central nervous system and on more than one occasion Paraclinical studies used to aid diagnosis and exclude other diagnoses include neuroimaging (MRI), analysis of cerebrospinal fluid, and evoked potential testing

Diagnosis should be made by a clinician with expertise in multiple sclerosis

Treatment strategies include: Treatment of acute exacerbations with...

More

Classification

Diagnosis

All Types ▾

multiple sclerosis

Back to results ✕

Search

English

سر فصل مطالب

- BASIC INFORMATION
- DEFINITION
- SYNONYMS
- EPIDEMIOLOGY & DEMOGRAPHICS
- PHYSICAL FINDINGS & CLINICAL PRESENTATION
- ETIOLOGY
- DIAGNOSIS
- DIFFERENTIAL DIAGNOSIS ( TABLE 2)
- DIAGNOSTIC STUDIES ( TABLE 3)
- IMAGING
- TREATMENT
- NONPHARMACOLOGIC THERAPY
- ACUTE GENERAL Rx ( TABLE 5)
- CHRONIC Rx
- DISPOSITION

Browse ▾ Tools ▾

Find 'multiple sclerosis' in this Chapter or Book

BOOK CHAPTER  
**Multiple Sclerosis**

امکان دانلود این فصل از کتاب در صورت لاگین کردن

Natasha Choudhury MD and Roumen Balabanov  
 Ferri's Clinical Advisor 2025, 742-747.e2



BASIC INFORMATION

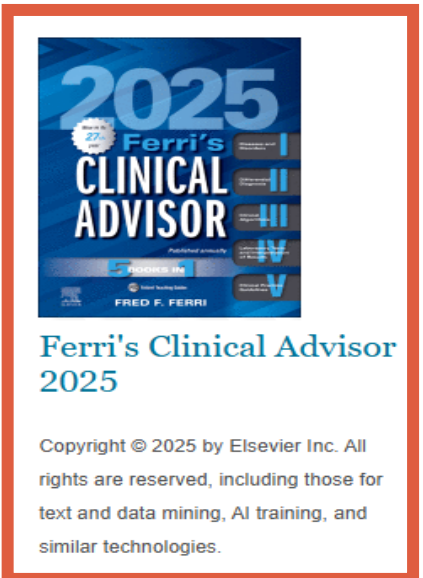
DEFINITION

Multiple sclerosis (MS) is a chronic, predominantly autoimmune demyelinating disease of the central nervous system (CNS), characterized by subacute neurologic deficits correlating with CNS lesions (typical for MS in location, shape, and orientation) separated in time (typically at least 1 mo) and space, and excluding other possible disease. 1 2 3

An MS relapse is defined as an acute to subacute (peaking over hours to days) onset of neurologic dysfunction (typically focal) lasting at least 24 h, and caused by inflammatory CNS demyelination. Relapses can be symptomatic or asymptomatic, the latter of which are represented by new enhancing MRI lesions without correlating symptoms.

Active subtypes include:

- **Relapsing-remitting MS (RRMS)** (85%): Relapses followed by complete or near-complete recovery over weeks to months (rarely beyond 6 mo), 50% to 85% of which later evolve to secondary progressive MS. 2 3
- **Primary progressive MS (PPMS)** (10% to 15%): Progressive worsening of neurologic disability from the onset, with rare distinct relapses. 2 3



Ferri's Clinical Advisor 2025

Copyright © 2025 by Elsevier Inc. All rights are reserved, including those for text and data mining, AI training, and similar technologies.

Get rights and content

جلد و مشخصات کتاب

- با انتخاب گزینه **Journals** و وارد کردن کلید واژه مناسب میتوانید برای یافتن مجلات و مقالات مورد نظر خود در این پایگاه اقدام کنید.
- نتایج حاصل از جستجو را می توان بر اساس نوع منبع، نوع مطالعه، تخصص و تاریخ فیلتر کرد.
- نتایج حاصل از جستجو را می توان بر اساس میزان مرتبط بودن و تاریخ نشر مرتب کرد.
- با کلیک بروی هر یک از نتایج بازیابی شده، جلد مجله چاپ کننده آن مقاله در سمت راست و سرفصل مطالب مهم مجود در مقاله در سمت چپ نمایش داده میشود.
- در صورتی که امکان دانلود کردن مقاله مورد نظر فراهم باشد، برای دریافت مقاله نیازی به لاگین کردن در پایگاه نیست .

یک بررسی کلی و سریع از موضوع مورد جستجو، مثل تعریف، تشخیص، درمان، پیشگیری و... در منابع کلینیکال کی

فیلتر کردن نتایج جستجو بر اساس: نوع منبع، نوع مطالعه، تخصص و تاریخ

Clear filters X

Filter By:

Source Type:

Journal Articles 19995

Select an Option

Full Text Only

Full Text and MEDLINE

Meta-analyses 484

Randomized Control Trials 738

Narrative Reviews 2849

Clinical Trials 521

Images 484

Books 421

Guidelines 267

Show More

Specialties:

Advanced Basic Science 102

Advanced Practice Nursing 6

19995 results

Sort by: Relevance

FULL TEXT ARTICLE

☆ ✉ 🖨 📄

### Mindfulness and Multiple Sclerosis: A Patient Guide

What is multiple sclerosis? Multiple sclerosis (MS) occurs when the immune system attacks myelin, the protective sheath surrounding the nerves in the brain and spinal cord. This attack damages the myelin sheath, interrupting the nerve signal commu...

Archives of Physical Medicine and Rehabilitation

Fenner, Samantha, OTD, OTR/L; Rider, John V., PhD, OTR/L, MSCS. American Congress of Rehabilitation Medicine. Published December 1, 2023. Volume 104, Issue 12. Pages 2187-2190. © 2023.

FULL TEXT ARTICLE

☆ ✉ 🖨 📄

### Consensus statement of the Spanish Society of Neurology on the treatment of multiple sclerosis and holistic patient management in 2023

AbstractThe last consensus statement of the Spanish Society of Neurology's Demyelinating Diseases Study Group on the treatment of multiple sclerosis (MS) was issued in 2016. Although many of the positions taken remain valid, there have been signif...

Neurology (Neurología, English Edition)

Meca-Lallana, J.E.; Martínez Yélamos, S.; ...Show all. Sociedad Española de Neurología. Published March 1, 2024. Volume 39, Issue 2. Pages 196-208. © 2023.

### Multiple Sclerosis

Clinical Overview

View Full Topic

Elsevier Point of Care

Key Points

Multiple sclerosis is a chronic and often disabling disease that impairs the central nervous system; it is considered to be immune mediated

Can be relapsing-remitting (85% of patients) or progressive; pace of disease and rate of progression vary

Symptoms vary widely depending on location and severity of lesions; they include numbness or tingling, muscle weakness/spasticity, vision problems, fatigue, impaired balance or coordination, and bladder dysfunction

Diagnosis is based on clinical evidence (supplemented by paraclinical studies) that disease activity consistent with focal demyelination has affected 2 or more areas of central nervous system and on more than one occasion Paraclinical studies used to aid diagnosis and exclude other diagnoses include neuroimaging (MRI), analysis of cerebrospinal fluid, and evoked potential testing

Diagnosis should be made by a clinician with expertise in multiple sclerosis

Treatment strategies include: Treatment of acute exacerbations with...

More



All Types



multiple sclerosis

[Back to results](#)[Search](#)[English](#)

سر فصل مطالب

Introduction

Methods

Results

Early diagnosis

Early treatment with disease-modifying therapies

Treatment escalation versus early onset of high-efficacy disease-modifying therapies

In-person and remote follow-up

Detection of suboptimal response and optimisation of treatment

Patient perspectives

Biomarkers

Pregnancy

Vaccination

Final comments and conclusions

Funding

Conflicts of interest

[Browse](#) [Tools](#)Find 'multiple sclerosis' in this [Article](#), [Issue](#), or [Journal](#)

## FULL TEXT ARTICLE

## Consensus statement of the Spanish Society of Neurology on the treatment of multiple sclerosis and holistic patient management in 2023

J.E. Meca-Lallana, S. Martínez Yélamos, S. Eichau, M. Á. Lla... Martínez, V. Meca Lallana, A.M. Alonso Torres, E. Moral Torres, J. Río, C. Calles, A. Ares Luque, L. Ramió-Torrentà, M.E. Marzo Sola, J.M. Prieto, M.L. Martínez Ginés, R. Arroyo, M.Á. Otano Martínez, L. Brieva Ruiz, M. Gómez Gutiérrez, A. Rodríguez-Antigüedad Zarranz, V.G. Sánchez-Seco, L. Costa-Frossard, M.Á. Hernández Pérez, L. Landete Pascual, M. González Platas and C. Oreja-Guevara

Neurology (Neurología, English Edition), 2024-03-01, Volume 39, Issue 2, Pages 196-208, Copyright © 2023 Sociedad Española de Neurología

دانلود این مقاله

### Abstract

The last consensus statement of the Spanish Society of Neurology's Demyelinating Diseases Study Group on the treatment of multiple sclerosis (MS) was issued in 2016. Although many of the positions taken remain valid, there have been significant changes in the management and treatment of MS, both due to the approval of new drugs with different action mechanisms and due to the evolution of previously fixed concepts. This has enabled new approaches to specific situations such as pregnancy and vaccination, and the inclusion of new variables in clinical decision-making, such as the early use of high-efficacy disease-modifying therapies (DMT), consideration of the patient's perspective, and the use of such novel technologies as remote monitoring.

In the light of these changes, this updated consensus statement, developed according to the Delphi method, seeks to reflect the new paradigm in the management of patients with MS, based on the available scientific evidence and the clinical expertise of the participants.

The most significant recommendations are that immunomodulatory DMT be started in patients with radiologically isolated syndrome with persistent radiological activity that patient perspectives be



Neurology  
(Neurología, English  
Edition)

Volume 39, Issue 2

Copyright © 2023 Sociedad Española  
de Neurología[Get rights and content](#)جلد و مشخصات  
مجله

در این پایگاه اطلاعاتی در هنگام جستجوی مقالات، ممکن است مقالات در دو دسته بندی دیده شوند:

Full Text Article ➤

MEDLINE® ➤

مقالات گروه اول به طور مستقیم و با کلیک بروی آیکون PDF قابل دانلود می باشند.  
مقالات گروه دوم با کلیک بروی PubMed ID و ارجاع به پایگاه اطلاعاتی پابمد، در صورتی که در این پایگاه دارای لینک فول تکست رایگان باشند قابل دانلود خواهند بود.

نمونه ای از مقاله  
فول تکست

نمونه ای از مقاله  
مدلاین

Clear filters X

Filter By:

Source Type:

Journal Articles 20622

Select an Option

Full Text Only

Full Text and MEDLINE

Meta-analyses 874

Randomized 1385

Control Trials

Narrative 2890

Reviews

Clinical Trials 592

Books 387

Guidelines 277

Clinical 156

Overviews

20622 results

Sort by: Relevance

FULL TEXT ARTICLE

## Guideline No. 422f: Menopause and Breast Cancer

ABSTRACTObjectiveProvide strategies for improving the care of perimenopausal and postmenopausal women based on the most recent published evidence. Target PopulationPerimenopausal and postmenopausal women. Benefits, Harms, and CostsTarget populatio...

Journal of Obstetrics and Gynaecology Canada (JOGC)

Jacobson, Michelle, MD, MHSc; Mills, Kelsey, MD, MSc; ...Show all. Published December 1, 2021. Volume 43, Issue 12. Pages 1450-1456.e1. © 2021.

MEDLINE®

NLM Citation ID  
39352042 (PubMed ID)

## Breast cancer statistics 2024.

This is the American Cancer Society's biennial update of statistics on breast cancer among women based on high-quality incidence and mortality data from the National Cancer Institute and the Centers for Disease Control and Prevention. Breast cance...

Giaquinto, Angela N; Sung, Hyuna; ...Show all. Updated November 8, 2024.

## Breast Cancer

Disease Overview

> View Full Topic

Ferri's Clinical Advisor 2025 · Ferri, Fred F., MD, FACP

DEFINITION

Breast cancer is an epithelial carcinoma arising from the ducts (ductal) or the lobules (lobular) of the breast that is initially in situ and over time progresses to become invasive in nature. [More](#)

CLASSIFICATION

ETIOLOGY

DIAGNOSIS

DIFFERENTIAL DIAGNOSIS

STAGING

IMAGING STUDIES

TREATMENT

Was this helpful? Yes or No

- بررسی های بالینی ابزاری برای جستجوی مشورت ها و بررسی های بالینی است.
- ابزار مناسبی برای تشخیص افتراقی برای پزشکان است.
- این قسمت کاملا حمایت کننده موضوع پزشکی مبتنی بر شواهد می باشد.
- نتایج حاصل از جستجو را می توان بر اساس نوع منبع، نوع مطالعه، تخصص و تاریخ فیلتر کرد.
- نتایج حاصل از جستجو را می توان بر اساس میزان مرتبط بودن و تاریخ نشر مرتب کرد.

یک بررسی کلی و سریع از موضوع مورد جستجو، مثل تعریف، تشخیص، درمان، پیشگیری و... در منابع کلینیکال کی

فیلتر کردن نتایج جستجو بر اساس: نوع منبع، نوع مطالعه، تخصص و تاریخ

Clear filters X

Filter By:

Source Type:

- Journal Articles 6981
- Select an Option
  - Full Text Only
  - Full Text and MEDLINE
- Meta-analyses 192
- Randomized Control Trials 214
- Narrative Reviews 1674
- Clinical Trials 521
- Images 485
- Books 421
- Guidelines 267
- Clinical Overviews 175

Show More

Specialties:

- Allergy and immunology 2
- Anesthesia 2
- Cardiothoracic 1

175 results

Sort by: Relevance

CLINICAL OVERVIEW

### Multiple Sclerosis

Multiple sclerosis is a chronic and often disabling disease that impairs the central nervous system; it is considered to be immune mediatedCan be relapsing-remitting (85% of patients) or progressive; pace of disease and rate of progression varySym...

Updated November 27, 2023. © 2024.

Jump to [Summary](#) [Diagnosis](#) [Workup](#) [Treatment](#)

CLINICAL OVERVIEW

### Multiple Sclerosis in Children

POMS (pediatric-onset multiple sclerosis) accounts for approximately 2% to 5% of all patients with the diseaseThe diagnostic criteria utilize MRI of the CNS (central nervous system) to establish "dissemination in time and space"Dissemination in ti...

Bell, Lena, MD; O'Neill, Kimberly, MD; ...[Show all](#). Updated September 23, 2024. © 2021.

CLINICAL OVERVIEW

### Disease-modifying Therapies for Multiple Sclerosis

First-line disease-modifying therapy options include immunomodulatory and immunosuppressive medications that have been shown to reduce the risk for relapse and new lesion formation on magnetic resonance imaging (MRI) scans.MS disease-modifying the...

Ontaneda, Daniel, Dr., MD, PhD; Fedorowicz, Zbigniew, Dr., PhD, MSc, DPH, BDS, LDSRCS; ...  
[Show all](#). Updated August 30, 2023. © 2024.

### Multiple Sclerosis

Clinical Overview [View Full Topic](#)

Elsevier Point of Care

[Key Points](#)

- [Classification](#)
- [Diagnosis](#)
- [Physical examination](#)
- [Genetics](#)
- [Imaging](#)
- [Complications](#)
- [Differential Diagnosis](#)
- [Treatment](#)
- [Complications](#)
- [Prognosis](#)
- [Prevention](#)

Was this helpful? Yes or No



## Multiple Sclerosis in Children



## OUTLINE

Open all

Close all

## Summary



## Basic Information



## Diagnosis



## Workup



## Differential Diagnosis

## Treatment



## Follow-Up



## Author Affiliations

## References

## CLINICAL OVERVIEW

## Multiple Sclerosis in Children

Lena Bell MD, Kimberly O'Neill MD and Lauren Krupp MD

Updated September 23, 2024. Copyright Elsevier BV. All rights reserved.

## Summary

## Key Points

- POMS (pediatric-onset multiple sclerosis) accounts for approximately 2% to 5% of all patients with the disease
- The diagnostic criteria utilize MRI of the CNS (central nervous system) to establish "dissemination in time and space"
  - Dissemination in time refers to appearance of new lesions over time that shows progressive nerve damage
  - Dissemination in space refers to the presence of lesions in more than 1 CNS location
- If a child fulfills the McDonald 2017 criteria, they can be diagnosed with MS<sup>16</sup>
- Many patients with MS will initially be diagnosed with ADEM (acute disseminated encephalomyelitis) until they present with a recurrence
- As other demyelinating disorders and CNS diseases can mimic MS, it is important to keep the differential for these in mind when working up the initial presentation of an MS-like illness

موارد مربوط  
به تشخیص و  
درمان بیماری  
و...

- کارآزمایی بالینی (Clinical Trial) نوعی پژوهش تجربی و قوی‌ترین نوع پژوهش برای اثبات رابطه علت و معلولی بین مداخله درمانی و درمان است. به‌طور کلی در کارآزمایی بالینی، افرادی را که وارد پژوهش می‌شوند، به‌صورت تصادفی حداقل به دو گروه تقسیم می‌شوند: یک گروه در معرض مداخله درمانی مورد پژوهش قرار می‌گیرند و گروه دیگر به‌عنوان گروه شاهد، یا در معرض هیچ‌گونه مداخله‌ای قرار نمی‌گیرند، یا در معرض مداخله درمانی استاندارد قرار می‌گیرند. در نهایت، نتایج مداخله با مقایسه دو گروه ارزیابی می‌شود.
- با انتخاب هر یک از نتایج حاصل از جستجو در فیلد Clinical Trial ها می‌توانید اطلاعات بیشتری مثل اهداف، وضعیت فازها و شماره کارآزمایی بالینی را مشاهده کنید.
- در صورت نیاز به داشتن اطلاعات بیشتر درباره هر کارآزمایی بالینی بروی لینک ارجاع به وب سایت [clinicaltrials.gov](http://clinicaltrials.gov) که در انتهای توضیحات مربوط به هر کارآزمایی بالینی قرار داده شده است کلیک کنید.

یک بررسی کلی و سریع از موضوع مورد جستجو، مثل تعریف، تشخیص، درمان، پیشگیری و... در منابع کلینیکال کی

Clear filters X

Filter By:

Source Type:

Journal Articles 3888

Select an Option

Full Text Only

Full Text and MEDLINE

Meta-analyses 52

Randomized Control Trials 93

Narrative Reviews 643

Images 525

Books 340

Guidelines 256

Clinical Trials 121

Show More

Specialties:

Other 121

Date:

Last 6 months 19

Last 12 months 37

Last 18 months 52

121 results

Sort by: Relevance

CLINICAL TRIAL

☆ ✉ 📄

## Introduction of Tandem Mass Spectrometry (MS/MS) Technology in the Program of Selective Screening of Hereditary Metabolic Diseases in Kazakhstan

In Kazakhstan, the use of MS/MS in metabolic screening programs is in development. This is due to the high cost of equipment and consumables, as well as the lack of special screening centers and specialists. Selective screening is an important too...

Published June 8, 2023. Conditions: Propionic/Methylmalonic Acidemias; Maple Syrup Urine Disease; Citrullinemia; Argininosuccinic Aciduria; Ornithine Transcarbamylase Deficiency. Interventions: Diagnostic Test: Obtaining Dry Blood Spots From Healthy Newborns (Aged 1-7 Days); Diagnostic Test: Obtaining Dry Blood Spots From Healthy Children Aged 8-18 Years; Diagnostic Test: Obtaining Dry Blood Spots From High-risk Newborns (Aged 1-7 Days); Diagnostic Test: Obtaining Dry Blood Spots From High-risk childrens (Aged 8 Days- 7 years); Diagnostic Test: Obtaining Dry Blood Spots From High-risk childrens (Aged 8 - 18 years).

CLINICAL TRIAL

☆ ✉ 📄

## Ventricular-arterial Coupling of the Heart Among Patients With Mitral Stenosis Undergoing Percutaneous Transluminal Mitral Commissurotomy. Cardiac Magnetic Resonance Study

Although the incidence of rheumatic fever and its complications has declined in developed countries, the disease remains a major health problem in many developing countries. It is estimated that up to 30 million school-age children and young adult...

## Mitral Valve Stenosis

Clinical Overview

View Full Topic

Elsevier Point of Care

Key Points

Mitral stenosis involves narrowing of mitral valve orifice, restricting blood flow from left atrium to left ventricle during diastole

Slowly progressive disease; many patients remain asymptomatic by readjusting their lifestyles to a more sedentary level

Rheumatic fever is the most common cause

Initial diagnosis is suggested by history and physical examination

Echocardiography is the diagnostic test of choice

No known drug therapies to prevent worsening of stenosis; antibiotic prophylaxis can help prevent rheumatic fever recurrence

Medical therapy, although not curative, can control the hemodynamic consequences of mitral stenosis, such as heart failure and atrial fibrillation

Percutaneous mitral balloon valvotomy is the therapy of choice for uncomplicated mitral stenosis

Surgical management of mitral stenosis (commissurotomy or valve replacement) is indicated in severely symptomatic patients with severe mitral stenosis (mitral valve area of 1.5 cm<sup>2</sup> or smaller, stage D) who are... [More](#)

فیلتر کردن نتایج جستجو بر اساس: نوع منبع، نوع مطالعه، تخصص و تاریخ

## Contacts and Locations

Top of Page ☆ ✉ 🖨

Purpose

Eligibility

**Contacts and Locations**

More Information

Please refer to this study by its ClinicalTrials.gov identifier: NCT05910151

## Locations

Regional perinatal center of Aktobe region

Status:	Recruiting
Facility:	Aktobe, Aktobe Region, 030000, Kazakhstan

## Sponsors and Collaborators

West Kazakhstan Medical University

## More Information

## Other Publications

First Received:	June 8, 2023
Last Updated:	June 8, 2023
ClinicalTrials.gov Identifier:	NCT05910151

ClinicalTrials.gov processed this data on June 20, 2023

[Link to the current ClinicalTrials.gov record.](#)

دسته بندی  
مطالب برای  
دسترسی  
بهتر و سریع  
تر

مشخصات کارآزمایی  
بالینی

لینک اطلاعات بیشتر  
در وب سایت  
clinicaltrials.gov

➤ از قسمت اطلاعات دارویی این پایگاه به دو صورت میتوان استفاده کرد:

۱. زمانی که به دنبال داروهای یک بیماری خاص میگردیم

۲. زمانی که میخواهیم درباره یک داروی خاص اطلاعاتی بدست آوریم

➤ لازم به ذکر است جهت محاسبه دوز مصرفی داروها متناسب با شرایط بیمار، از قسمت **calculators** استفاده نمایید.



New View

Browse Tools

Clear filters X

Filter By:

Source Type:

 Journal Articles 12016

Select an Option

 Full Text Only Full Text and MEDLINE Meta-analyses 160 Randomized Control Trials 432 Narrative Reviews 3685 Books 1789 Images 628 Clinical Trials 584 Clinical Overviews 168 Drug Monographs 6

Show More

Specialties:

 Other 5 6 results

Sort by: Relevance

 DRUG MONOGRAPH

☆ ✉ 🖨

## Gabapentin

Gabapentin is an analog of gamma-aminobutyric acid (GABA) that is approved for use as an adjunct therapy in the treatment of partial seizures with or without secondary generalized tonic-clonic seizures, postherpetic neuralgia (PHN), and moderate t...

Elsevier Drug Information. Updated January 5, 2025.

 DRUG MONOGRAPH

☆ ✉ 🖨

## Pregabalin

Pregabalin is an oral compound that is chemically and structurally similar to gabapentin, with antiepileptic, analgesic, and anxiolytic properties. It is indicated for neuropathic pain associated with diabetic peripheral neuropathy or spinal cord ...

Elsevier Drug Information. Published December 6, 2024.

 DRUG MONOGRAPH

☆ ✉ 🖨

## PENTobarbital

Pentobarbital is a short-acting oral and parenteral barbiturate. It has sedative-hypnotic and anticonvulsant properties, and is used primarily in the short-term treatment of insomnia. Other uses include sedation induction; relief of preoperative a...

Elsevier Drug Information. Published January 9, 2025.

## Gabapentin

Drug Overview

[View Full Topic](#)

Drug Monograph

Classifications

Central and Peripheral Nervous System

Analgesics

Neuropathic Pain and Peripheral Neuropathy Agents

Anticonvulsants

Anticonvulsants, Gabapentinoids

Monograph

Indications &amp; Dosage

Administration

Contraindications

Interactions

Adverse Reactions

Monitoring Parameters

فیلتر کردن نتایج  
جستجو بر اساس:  
نوع منبع،  
نوع مطالعه،  
تخصص و تاریخ

Clear filters ×

Filter By:

Source Type:

Journal Articles 9578

Select an Option

Full Text Only

Full Text and MEDLINE

Meta-analyses 285

Randomized Control Trials 329

Narrative Reviews 2276

Books 1162

Guidelines 943

Clinical Overviews 797

Clinical Trials 352

Drug Monographs 69

Show More ▼

Specialties:

Other 69

69 results

Sort by: Relevance ▼

DRUG MONOGRAPH

☆ ✉ 🖨

## metFORMIN

Metformin is an oral biguanide used to improve glycemic control in adult and pediatric patients 10 years and older with type 2 diabetes mellitus (T2DM).[28550][60711][60714][60715][64593] The actions of metformin differ from, yet complement, those...

Elsevier Drug Information. Published January 14, 2025.

DRUG MONOGRAPH

☆ ✉ 🖨

## Pioglitazone; metFORMIN

Pioglitazone; metformin is a combination product containing 2 oral antidiabetic agents. Metformin is a biguanide agent that improves insulin sensitivity. Pioglitazone is a member of the thiazolidinedione (TZD) class. The combination is used as an ...

Elsevier Drug Information. Published December 27, 2024.

DRUG MONOGRAPH

☆ ✉ 🖨

## glyBURIDE

Glyburide is a potent, 'second-generation', oral sulfonylurea antidiabetic agent. Glyburide is 150 times more potent than tolbutamide on a molar basis. Glyburide is also twice as potent as the related second-generation agent glipizide.[23493] Gly...

Elsevier Drug Information. Published May 24, 2024.

## Diabetes Mellitus

Disease Overview

> View Full Topic

Ferris's Clinical Advisor 2025 · Ferri, Fred F., MD, FACP

DEFINITION

- Diabetes mellitus (DM) refers to a syndrome of hyperglycemia resulting from many different causes (see "Etiology"). It is broadly classified into type 1 (T1DM) and type 2 DM (T2DM). The terms *insulin-dependent* and *non-insulin-dependent* diabetes are obsolete because when a person with type 2 diabetes needs insulin, he or she remains labeled as type 2 and is not reclassified as type 1. Immune-mediated type 1 DM (type 1A) represents 5% to 10% of newly diagnosed diabetics. Tables 1 and 2 provide a general comparison of the two types of DM. One difference is that type 1 has usually complete or near-total knockout of insulin reserves mediated solely by immunogenic responses from carriers of certain genotypes, whereas type 2 is of polygenetic origin and may have patients who may start with hyperinsulinemia but have insulin resistance and through environmental factors such as diet and sedentary lifestyle leads to an imbalance between glucagon and insulin levels,...

ETIOLOGY

▼

DIAGNOSIS

▼

DIFFERENTIAL DIAGNOSIS

فیلتر کردن نتایج  
جستجو بر اساس:  
نوع منبع،  
نوع مطالعه،  
تخصص و تاریخ

## metFORMIN



## DRUG MONOGRAPH

## metFORMIN

Fortamet | Glucophage | Glucophage XR | Glumetza | Riomet | RIOMET ER

Last Revised: January 15, 2025 - Drug Information Provided by Elsevier Drug Information ( [see details](#) )

## Description

Metformin is an oral biguanide used to improve glycemic control in adult and pediatric patients 10 years and older with type 2 diabetes mellitus (T2DM).<sup>28550 60711 60714 60715 64593</sup> The actions of metformin differ from, yet complement, those of other antidiabetic therapies. First-line T2DM therapy depends on comorbidities, patient-centered treatment factors, and management needs. For the treatment of hyperglycemia, metformin is the drug of choice in most patients with T2DM, based on its glucose-lowering efficacy, minimal risk of hypoglycemia, lack of weight increase, and affordability; some organizations have advocated metformin remain a first-line medication for T2DM when other comorbidities are not present.<sup>70579</sup> However, in patients with T2DM with or at high risk for atherosclerotic cardiovascular (CV) disease, heart failure (HF), and/or chronic kidney disease (CKD), glucagon-like peptide-1 receptor agonists (GLP-1 RA) or sodium-glucose co-transporter 2 (SGLT2) inhibitors, with or without metformin based on glycemic needs, are appropriate initial therapy.<sup>50321 60608 64926</sup> While metformin carries a low risk for lactic acidosis as outlined in the prescribing information and boxed warning of all metformin-containing products, care in prescribing and monitoring can reduce this risk. In a follow-up study to the UKPDS, researchers found that after 10-years of resuming typical care, patients originally randomized to metformin therapy had a 33% relative reduction in the risk of myocardial infarction and a 27% relative reduction in the risk of death from any cause as compared to patients receiving conventional therapy; the reductions in cardiovascular risk persisted even though A1C concentrations were similar in the 2 groups after 1 year of follow-up.<sup>34541</sup> In patients with prediabetes, metformin reduces the risk of future diabetes by 25% to 30% and may confer CV benefit.<sup>60608</sup> Metformin is used as an off-label treatment for polycystic ovary syndrome (PCOS); the drug improves weight management, glucose tolerance, reduces androgen production, and improves menstrual regulation, ovulation, and fertility in these patients.<sup>70439</sup> Metformin continues to be studied for a variety of other off-label conditions. Metformin was initially FDA approved in 1995.<sup>28550 60711 60714 60715 64593</sup>

## OUTLINE

## Description

## Indications &amp; Dosage

## Contraindications &amp; Precautions

## Pregnancy

## Lactation

## Interactions

## Adverse Reactions

## Administration

## Mechanism of Action

## Pharmacokinetics

## Monitoring Parameters

## Classifications

## Global Drug Names

## References

دسته بندی  
مطالب برای  
دسترسی  
بهتر و سریع  
تر

- راهنمای بالینی یا گاید لاین (که به آن راهنمای پزشکی، راهنمای درمان استاندارد یا دستورالعمل بالینی نیز گفته می شود) سندی است که با هدف هدایت تصمیمات و معیارهای مربوط به تشخیص، مدیریت و درمان در حوزه های خاص مراقبت های بهداشتی تهیه و تدوین میشود.
- این دستورالعمل ها به پزشکان کمک می کنند تا بهترین روش های تشخیص، معالجه و حتی پیشگیری از بیماری ها را مطالعه کرده و در مواقع ضروری از آن بهره ببرند. راهنماهای موجود در گایدلاین های آنها بر اساس قوی ترین شواهد علمی تنظیم شده است.
- استفاده از این گایدلاین های بالینی حمایت کننده موضوع پزشکی مبتنی بر شواهد می باشد.



یک بررسی کلی و سریع از موضوع مورد جستجو، مثل تعریف، تشخیص، درمان، پیشگیری و... در منابع کلینیکال کی

CME/MOC

ClinicalKey®

Guidelines

MS

New View

Browse Tools

Clear filters X

Filter By:

Source Type:

Journal Articles 3889

Select an Option

Full Text Only

Full Text and MEDLINE

Meta-analyses 52

Randomized Control Trials 93

Narrative Reviews 643

Images 525

Books 340

Guidelines 256

Clinical Trials 121

Show More

Specialties:

Advanced Basic Science 1

Allergy and Immunology 1

Cardiothoracic Surgery 12

256 results

Sort by: Relevance

FULL TEXT ARTICLE

☆ ✉ 🖨 📄

## Recommendations for the Use of Echocardiography in the Evaluation of Rheumatic Heart Disease: A Report from the American Society of Echocardiography

Acute rheumatic fever and its chronic sequela, rheumatic heart disease (RHD), pose major health problems globally, and remain the most common cardiovascular disease in children and young people worldwide. Echocardiography is the most important dia...

Journal of the American Society of Echocardiography

Pandian, Natesa G., MD (Chair); Kim, Jin Kyung, MD, PhD, FASE (Co-Chair); ...Show all. Published January 1, 2023. Volume 36, Issue 1. Pages 3-28. © 2022.

FULL TEXT ARTICLE

☆ ✉ 🖨 📄

## 2024 ACC Expert Consensus Decision Pathway on Practical Approaches for Arrhythmia Monitoring After Stroke

Article in Press : Corrected Proof

Flowchart of Poststroke Monitoring and Treatment Strategy Patients with recent ischemic strokes should be comprehensively evaluated for the most likely underlying cause. Determination of the etiology will guide therapeutic decisions, specifically ...

JACC (Journal of the American College of Cardiology)

Spooner, Michael T., MD, FACC; Messé, Steven R., MD; ...Show all. American College of Cardiology Foundation. © 2024.

## Mitral Valve Stenosis

Clinical Overview

> View Full Topic

Elsevier Point of Care

Key Points

Classification

Diagnosis

History

Physical examination

Imaging

Differential Diagnosis

Treatment

Complications

Complications

Complications

Complications

Prognosis

Prevention

فیلتر کردن نتایج جستجو بر اساس: نوع منبع، نوع مطالعه، تخصص و تاریخ

Was this helpful? Yes or No



All Types



MS

Back to results X

Search

English

سر فصل مطالب

Browse Tools

Find 'MS' in this Article, Issue, or Journal

## FULL TEXT ARTICLE

## Recommendations for the Use of Echocardiography in the Evaluation of Rheumatic Heart Disease: A Report from the American Society of Echocardiography

Natesa G. Pandian MD (Chair), Jin Kyung Kim MD, PhD, FASE (Co-Chair), Jose Antonio Arias-Godinez MD, Gerald R. Marx MD, FASE, Hector I. Michelena MD, FASE, Jagdish Chander Mohan MBBS, MD, DM, FASE, Kofoworola O. Ogunyankin MD, FASE, Ricardo E. Ronderos MD, PhD, FASE, Leyla Elif Sade MD, Anita Sadeghpour MD, FASE, Shantanu P. Sengupta MD, DNB, FASE, Robert J. Siegel MD, FASE, Xianhong Shu MD, PhD, Amiliana M. Soesanto MD, PhD, Lissa Sugeng MD, FASE, Ashwin Venkateshvaran PhD, RCS, RDCS, FASE, Marcelo Luiz Campos Vieira MD, PhD and Stephen H. Little MD, FASE

Journal of the American Society of Echocardiography, 2023-01-01, Volume 36, Issue 1, Pages 3-28, Copyright © 2022

Acute rheumatic fever and its chronic sequela, rheumatic heart disease (RHD), pose major health problems globally, and remain the most common cardiovascular disease in children and young people worldwide. Echocardiography is the most important diagnostic tool in recognizing this preventable and treatable disease and plays an invaluable role in detecting the presence of subclinical disease needing prompt therapy or follow-up assessment. This document provides recommendations for the comprehensive use of echocardiography in the diagnosis and therapeutic intervention of RHD. Echocardiographic diagnosis of RHD is made when typical findings of valvular and subvalvular abnormalities are seen, including commissural fusion, leaflet thickening, and restricted leaflet mobility, with varying degrees of calcification. The mitral valve is predominantly affected, most often leading to mitral stenosis. Mixed valve disease and associated cardiopulmonary pathology are common. The severity of valvular lesions and hemodynamic effects on the cardiac chambers and pulmonary artery pressures should be rigorously examined. It is essential to take advantage of all available modalities of echocardiography to obtain accurate anatomic and hemodynamic details of the affected valve lesion(s) for diagnostic and strategic pre-treatment planning. Intraprocedural echocardiographic guidance is critical during catheter-based or surgical treatment of RHD, as is echocardiographic surveillance for post-intervention complications or disease progression. The role of echocardiography is indispensable in the entire spectrum of RHD management.

## Table of Contents

## I. Introduction

## II. Epidemiology of Rheumatic Heart Disease

## III. Basic Concepts of Pathophysiology, Clinical Presentation, and Screening

## A. Pathophysiology and Clinical Presentation

## B. Echocardiographic Screening in Acute Rheumatic Fever

## IV. Rheumatic Valve Lesions

## A. Mitral Stenosis

## B. Rheumatic Mitral Regurgitation

## C. Rheumatic Aortic Valve

## D. Rheumatic Tricuspid Stenosis

## E. Rheumatic Tricuspid Regurgitation

## F. Rheumatic Pulmonic Valve

## G. Assessment of Mixed Valve Disease



Journal of the American Society of Echocardiography

Volume 36, Issue 1

Copyright © 2022

Get rights and content

جلد و مشخصات  
مجله

- امروزه آموزش به بیمار بخش مهمی از مراقبت های سلامت محسوب می شود. آموزش برای بیماران یک حق و برای ارائه دهندگان خدمت یک مسئولیت است.
- هدف کلی آموزش ارتقاء سلامت جامعه است که این امر با ارتقاء خودمراقبتی با کمک افزایش دانش و آگاهی بیماران و یا مراقبین بیماران امکان پذیر است.
- این آموزش ها توسط پزشکان، پرستاران و سایر پیراپزشکان انجام میشود.
- قسمت آموزش به بیمار در پایگاه کلینیکال کی اطلاعاتی درباره بیماری ها را با زبان ساده که برای آموزش به بیمار کاملا مناسب است را در اختیار شما قرار میدهد.
- نتایج حاصل از جستجو را می توان بر اساس نوع منبع، نوع مطالعه، تخصص و تاریخ فیلتر کرد.
- نتایج حاصل از جستجو را می توان بر اساس میزان مرتبط بودن و تاریخ نشر مرتب کرد.

یک بررسی کلی و سریع از موضوع مورد جستجو، مثل تعریف، تشخیص، درمان، پیشگیری و... در منابع کلینیکال کی

Clear filters ✕

Filter By:

Source Type:

Journal Articles 9578

Select an Option

Full Text Only

Full Text and MEDLINE

Meta-analyses 285

Randomized Control Trials 329

Narrative Reviews 2276

Books 1162

Guidelines 943

Clinical Overviews 797

Clinical Trials 352

Patient Education 43

Show More ▾

Specialties:

Dermatology 4

Endocrinology & Metabolism 4

Endocrinology and Metabolism 37

Internal Medicine 1

43 results

Sort by: Relevance ▾

PATIENT EDUCATION ☆ ✉ 🖨

### Diabetes

Learn how to live with diabetes. Overview If you just found out you have diabetes, you probably have a lot of questions and you may feel a little uncertain. But you're not alone. In the United States, 23.6 million people have diabetes. Most of these...

Available to print in [English](#) & [Spanish](#). American Academy of Family Physicians. Published November 22, 2016.

PATIENT EDUCATION ☆ ✉ 🖨

### Diabetes Mellitus and Exercise

Diabetes Mellitus and Exercise 2005-03-09 2023-06-07 2023-06-07 Elsevier Patient Education © 2024 Elsevier Inc. 2024 Elsevier Regular exercise is important for your health, especially if you have diabetes mellitus. Exercise is not just about losin...

Available to print in [English](#) & [Spanish](#). Interactive Patient Education. Published December 4, 2024.

PATIENT EDUCATION ☆ ✉ 🖨

### Diabetes Mellitus and Exercise

Diabetes Mellitus and Exercise 2020-11-30 2023-06-28 2023-06-28 Elsevier Patient Education © 2024 Elsevier Inc. 2024 Elsevier Diabetes Mellitus and Exercise Regular exercise is important for your health, especially if you have diabetes mellitus. E...

Available to print in [English](#), [English](#) ...[Show all](#). Interactive Patient Education. Published December 4, 2024.

PATIENT EDUCATION ☆ ✉ 🖨

### Diabetes and Heart Disease

### Diabetes Mellitus

Disease Overview

[View Full Topic](#)

Ferri's Clinical Advisor 2025 · Ferri, Fred F., MD, FACP

DEFINITION ^

• Diabetes mellitus (DM) refers to a syndrome of hyperglycemia resulting from many different causes (see "Etiology"). It is broadly classified into type 1 (T1DM) and type 2 DM (T2DM). The terms *insulin-dependent* and *non-insulin-dependent* diabetes are obsolete because when a person with type 2 diabetes needs insulin, he or she remains labeled as type 2 and is not reclassified as type 1. Immune-mediated type 1 DM (type 1A) represents 5% to 10% of newly diagnosed diabetics. [Tables 1](#) and [2](#) provide a general comparison of the two types of DM. One difference is that type 1 has usually complete or near-total knockout of insulin reserves mediated solely by immunogenic responses from carriers of certain genotypes, whereas type 2 is of polygenetic origin and may have patients who may start with hyperinsulinemia but have insulin resistance and through environmental factors such as diet and sedentary lifestyle leads to an imbalance between glucagon and insulin levels, ... [More](#)

ETIOLOGY ▾

DIAGNOSIS ▾

DIFFERENTIAL DIAGNOSIS ▾

TREATMENT ▾

Was this helpful? [Yes](#) or [No](#)

فیلتر کردن نتایج جستجو بر اساس: نوع منبع، نوع مطالعه، تخصص و تاریخ

## PATIENT EDUCATION

## Diabetes

Copyright © 1999-2016 by the American Academy of Family Physicians.  
Last revised: November 22, 2016.

## Overview

If you just found out you have diabetes, you probably have a lot of questions and you may feel a little uncertain. But you're not alone. In the United States, 23.6 million people have diabetes. Most of these people lead full, healthy lives. One of the best things you can do for yourself is to learn all you can about diabetes. This article will tell you some of the basics about diabetes.

## What is diabetes?

Diabetes is a disease that occurs when a person's body doesn't make enough of the hormone insulin or can't use insulin properly. There are 2 types of diabetes. Type 1 diabetes occurs when your body's pancreas doesn't produce any insulin. Type 2 diabetes occurs when the pancreas either doesn't produce enough insulin or your body's cells ignore the insulin. Between 90% and 95% of people who are diagnosed with diabetes have type 2 diabetes.

## What is type 1 diabetes?

Type 1 diabetes is also called insulin-dependent diabetes. It is sometimes called juvenile diabetes because it is usually discovered in children and teenagers, but adults may also have it.

## What is type 2 diabetes?

Type 2 diabetes occurs when the body doesn't produce enough insulin or the body's cells ignore the insulin.

## Can children get type 2 diabetes?

## Overview

What is diabetes?

What is type 1 diabetes?

What is type 2 diabetes?

Can children get type 2 diabetes?

What is pre-diabetes?

Can I live a normal life with diabetes?

## Symptoms

What are the symptoms of diabetes?

## Causes &amp; Risk Factors

What causes diabetes?

Am I at risk? What can I do to reduce my risk?

What are the risk factors for type 2 diabetes?

## Weight

## Age

## Family history

## Race/ethnic background

دسته بندی  
مطالب موجود در  
این آموزش به  
بیمار

Print

Available to print in [Spanish](#) & [English](#).

امکان پرینت گرفتن



- در قسمت چند رسانه ای ها تصاویر و ویدئو هایی مرتبط با جستجوی شما بازیابی میشوند.
- با کلیک بروی هر یک از رکورد های بازیابی شده ضمن دسترسی به عکس و فیلم مورد نظر، مختصر اطلاعاتی درباره منبع آن چندرسانه ای نیز نمایش داده میشود و در صورت نیاز به اطلاعات بیشتر درباره منبع مورد نظر بروی **View in source** کلیک کنید.
- ویدئو های بازیابی شده قابلیت دانلود ندارند اما تصاویر را میتوان از طریق کلیک راست و گزینه **Save Image** دانلود نمود.
- نتایج حاصل از جستجو را میتوان از طریق فیلتر های سمت چپ پایگاه، ه فقط عکس و یا فقط فیلم محدود کرد.
- برای استفاده از چندرسانه ای ها در ساخت اسلاید حتما میبایست در پایگاه لاگین کرده باشید.



New View

Browse Tools

Clear filters X

Filter By:

Source Type:

Journal Articles 8032

Select an Option

- Full Text Only
- Full Text and MEDLINE

Meta-analyses 141

Randomized Control Trials 230

Narrative Reviews 1207

Images 971

Clinical Trials 785

Books 488

Guidelines 72

Videos 19

Show More

Specialties:

Anesthesia 28

Complementary Medicine 1

Emergency 7

Endocrinology and Metabolism 13

990 results

Sort by: Relevance

VIDEO

## Robotic Single-site Cholecystectomy

Robotic Single-site Cholecystectomy Yuri Novitsky n/a Anthony Gonzalez n/a 24 Anthony Gonzalez, MD: Robotic single-site cholecystectomy. Anthony Gonzalez, MD. A 2.5-centimeter incision is measured vertically from the umbilical base inferiorly. The...

Yuri Novitsky. Published February 16, 2021.

VIDEO

## Laparoscopic Cholecystectomy

George W. Holcomb III MD Narrator: This patient is a seven year old with symptomatic cholelithiasis. A preoperative ultrasound study does not show evidence of an enlarged common bile duct. Following prepping and draping, a 10-millimeter cannula ha...

George W. Holcomb III MD. Published April 18, 2019.

IMAGE

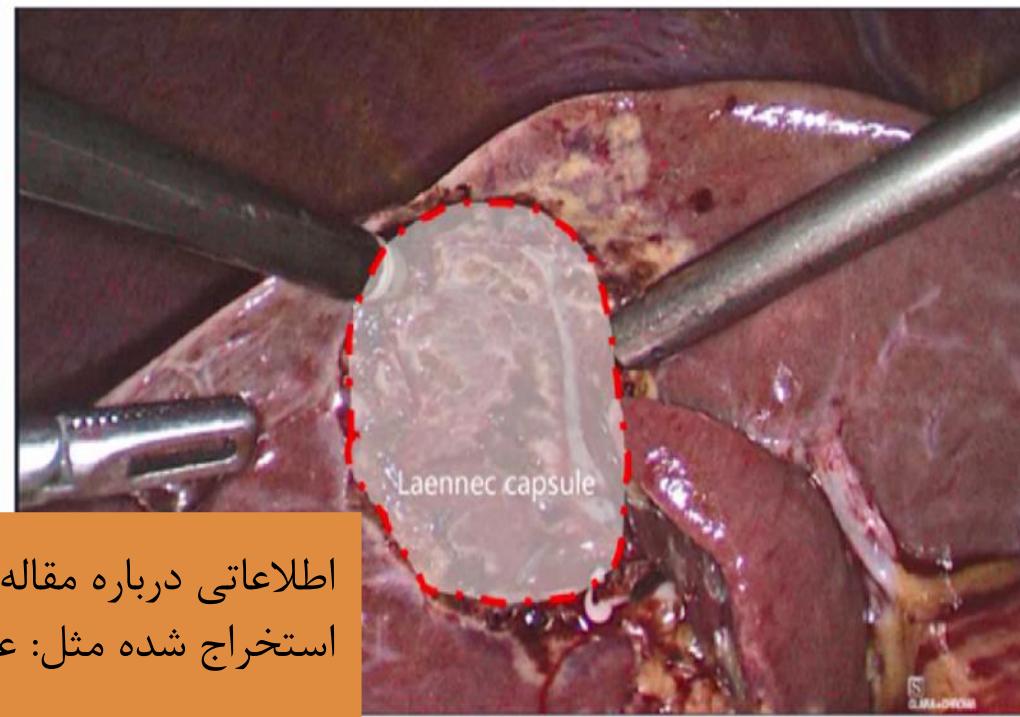
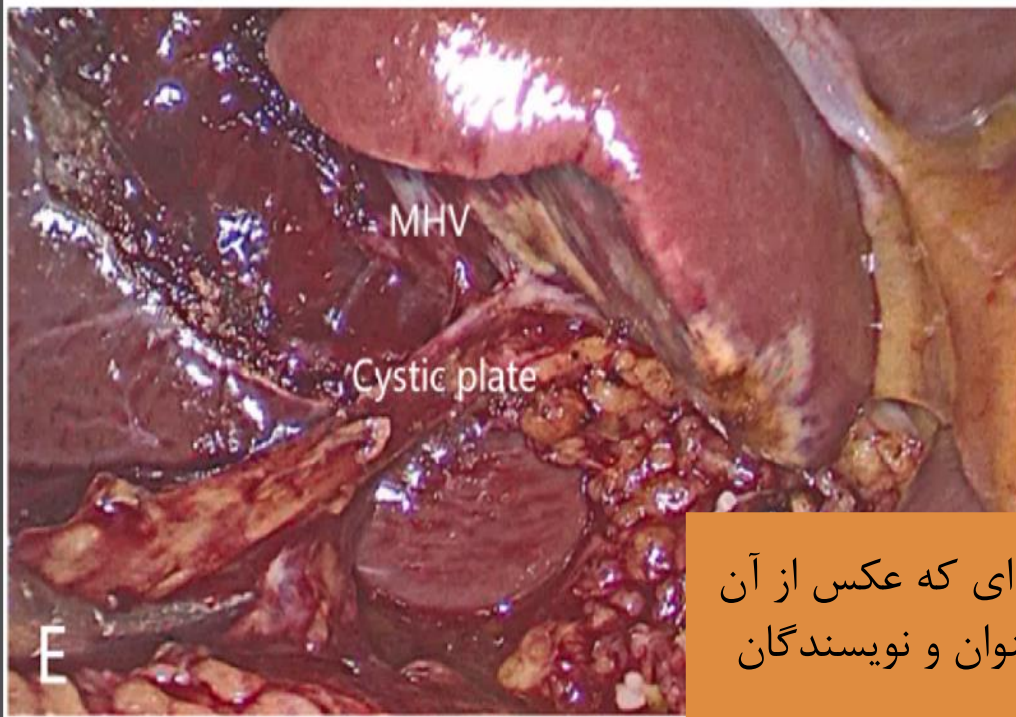
## Cholecystectomy and risk of metabolic syndrome

Additional pathways linking cholecystectomy and metabolic disturbances, including liver steatosis. After cholecystectomy, the dynamic reservoir function of the gallbladder controlled by neural mechanisms and entero-hormones (i.e. stimulatory fasti...

Di Ciaula, Agostino; Garruti, Gabriella; ...Show all. Published July 1, 2018. Volume 53. © 2018.

VIDEO

فیلتر کردن نتایج جستجو بر اساس: تصاویر و یا ویدئو ها



اطلاعاتی درباره مقاله ای که عکس از آن استخراج شده مثل: عنوان و نویسندگان

☆ □ ✉ 🖨

IMAGE

Laparoscopic cholecystectomy based on Laennec approach via the cystic plate with lymphadenectomy in Calot's triangle for gallbladder neoplasms: Initial experience and technical details

iLIVER.

Ouyang, Bin; Zhang, Laizhu; Cao, Yajuan; Xing, Zhongjie; Peng, Jin; Yue, Yang; Yu, Decai. Published December 1, 2023. Volume 2, Issue 4. Pages 202-207. © 2023.

Fig. 4 Procedures for laparoscopic cholecystectomy based on Laennec approach with cystic plate dissected lastly for patient No. 5. First dissect the ventral visceral peritoneum of the Calot's triangle along common bile duct (A) and the dorsal visceral peritoneum along the right hepatic pedicle (B), separate and detach the gallbladder artery and gallbladder duct (C). Then dissect the visceral peritoneum of the liver close to the gallbladder bed with an electrocoagulation hook, bluntly separate into the Laennec gap, and completely strip the gallbladder from the gallbladder bed membrane through the Laennec approach (D-E), detach the gallbladder plate (E), the gallbladder bed is rinsed and tightly hemostated, and bile leakage are carefully examined (F). The red line was marked to guide the dissection path. The shadow zone was covered by Laennec capsule. CBD means common bile duct; MHV means middle hepatic vein; LN means lymph node.

[View in source](#)

مشاهده تصویر در منبع آن

- ماشین حساب بالینی قسمت بسیار کاربردی برای تمامی شاغلین در حوزه سلامت بویژه پزشکان و پرستاران می باشد.
- این قسمت در محاسبات دوز مصرفی انواع داروها برای بیماران بر اساس قد، وزن، سن و سایر موارد حائز اهمیت در تجویز دارو مورد استفاده قرار میگیرد.
- در این قسمت مواردی از قبیل محاسبه BMI، سنجش وضعیت فشار خون برای بیماران بر حسب قد، وزن، سن و سایر موارد مهم در بیمار نیز امکان پذیر است.



## Clinical Calculators

## Browse by category

- Body Metrics
- Cardiology
- Critical Care
- Drug Calculators
- Gastrointestinal
- Hematology/Oncology
- Infectious Diseases
- Metabolic
- Nephrology
- Neurology/Psychiatry
- Other
- Pediatrics
- Pulmonology
- Rheumatology/Immunology
- Unit Conversion Calculators

## Search clinical calculators



دسته بندی انواع ماشین حساب  
حساب های بالینی پایگاه







Body Mass Index for Adults (BMI Quetelet's Index, Metric)



## Body Mass Index for Adults (BMI Quetelet's Index, Metric)

2024 - EBMCalc in cooperation with Elsevier Drug Information

### Body Mass Index for Adults (BMI Quetelet's Index, Metric)

#### Input

Height

Weight

ورود قد و وزن

#### Results

BMI

Decimal Precision

عدد شاخص توده بدنی

### Body Mass Index Interpretation

محدوده شاخص توده بدنی

<b>BMI &lt; 18.5:</b> Below normal weight
<b>BMI &gt;= 18.5 and &lt; 25:</b> Normal weight
<b>BMI &gt;= 25 and &lt; 30:</b> Overweight
<b>BMI &gt;= 30 and &lt; 35:</b> Class I Obesity
<b>BMI &gt;= 35 and &lt; 40:</b> Class II Obesity
<b>BMI &gt;= 40:</b> Class III Obesity



## امکان BROWSE

- یکی از مزیت های این پایگاه اطلاعاتی در مقایسه با پایگاه های مشابه امکان مرور سریع یا به بیان بهتر تورق کردن در آن است.
- مرور سریع در قسمت های مختلف پایگاه نظیر کتاب ها، مجلات، بررسی های بالینی، کارآزمایی های بالینی، گایدلاین ها، آموزش به بیمار و چند رسانه ای ها در دسترس است.
- در این قسمت با استفاده از دسته بندی الفبایی که برای هر یک از بخش ها وجود دارد میتوان مروری سریع بر محتویات هر یک از این قسمت ها داشت.
- امکان مرور سریع یا تورق به شما در یافتن هرچه سریع تر نتایج مورد نظر، بویژه در زمانی که اشراف کاملی به موضوع مورد نیاز خود و یا محتوای قسمت های مختلف کلینیکال کی ندارید، بسیار کمک کننده است.

New View

Browse ^

Tools v

قسمت هایی از پایگاه  
که امکان مرور سریع در  
آنها وجود دارد

Filter By:

Source Type:

Journal Articles

Select an Option

Full Text Only

Full Text and MEDLINE

Meta-analyses 192

Randomized 214

Control Trials

Narrative Reviews 1674

Clinical Trials 521

Images 486

Books 420

Guidelines 267

Show More v

Specialties:

Advanced Basic 132

Science

Advanced Practice 6

Nursing

Allergy and 1041

Immunology

Books

Journals

Clinical Overviews

Drug Monographs

Guidelines

Patient Education

Multimedia

Procedure Videos

CLINICAL OVERVIEW

## Disease-modifying Therapies for Multiple Sclerosis

First-line disease-modifying therapy options include immunomodulatory and immunosuppressive medications that have been shown to reduce the risk for relapse and new lesion formation on magnetic resonance imaging (MRI) scans. MS disease-modifying the...

Ontaneda, Daniel, Dr., MD, PhD; Fedorowicz, Zbigniew, Dr., PhD, MSc, DPH, BDS, LDSRCS; ...  
Show all. Updated August 30, 2023. © 2024.

CLINICAL OVERVIEW

## Multiple Sclerosis in Children

POMS (pediatric-onset multiple sclerosis) accounts for approximately 2% to 5% of all patients with the disease. The diagnostic criteria utilize MRI of the CNS (central nervous system) to establish "dissemination in time and space." Dissemination in ti...

Bell, Lena, MD; O'Neill, Kimberly, MD; ... Show all. Updated September 23, 2024. © 2021.

## Multiple Sclerosis

Clinical Overview

> View Full Topic

Elsevier Point of Care

Key Points v

Classification v

Diagnosis v

Physical examination v

Genetics v

Imaging v

Complications v

Differential Diagnosis v

Treatment v

Complications v

Prognosis v

Prevention v

Was this helpful? Yes or No

مرور مجلات

Browse Tools

Browse Journals

دسته بندی الفبائی

Filter By:

Specialties

- Advanced Basic Science 2
- Allergy and Immunology 1
- Anesthesia 3
- Critical Care 2
- Dentistry 1
- Endocrinology and Metabolism 1
- Gastroenterology and Hepatology 1
- + More Specialties 17
- Subscribed Content

Filter List by Title

# A B C D E F G H I J K L M N O P Q R S T U V W X Y Z | ×

- Behavior Therapy
- Best Practice & Research: Clinical Anaesthesiology
- Best Practice & Research: Clinical Endocrinology & Metabolism
- Best Practice & Research: Clinical Gastroenterology
- Best Practice & Research: Clinical Haematology
- Best Practice & Research: Clinical Obstetrics & Gynaecology
- Best Practice & Research: Clinical Rheumatology
- Biocybernetics and Biomedical Engineering
- Biological Psychiatry
- Biological Psychiatry: Cognitive Neuroscience and Neuroimaging
- Biological Psychiatry Global Open Science
- Biology of Blood and Marrow Transplantation

Featured Journals



Annals of Medicine and Surgery



American Heart Journal

مجلات ویژه

فیلتر کردن نتایج جستجو بر اساس تخصص ها

مرور کتاب ها

Browse ▾ Tools ▾

Saved Searches

Search History

Browse Books

دسته بندی الفبائی

Filter By:

Specialties

Advanced Basic Science

Anatomy

Anesthesia

Biochemistry

Cardiovascular

Clinical Examination

Community and Public Health, Health Promotion

+ More Specialties

Subscribed Content

Filter List by Title

# A B C D E F G H I J K L M N O P Q R S T U V W X Y Z | x

Habif's Clinical Dermatology

Hacker & Moore's Essentials of Obstetrics and Gynecology

Hagberg and Benumof's Airway Management

Ham's Primary Care Geriatrics

Handbook of Cancer Treatment-Related Toxicities

Handbook of Diagnostic Endocrinology

Handbook of Dialysis Therapy

Handbook of Liver Disease

Handbook of Local Anesthesia

Handbook of Obesity in Obstetrics and Gynecology

Handbook of Perioperative and Procedural Patient Safety

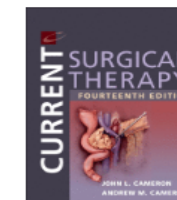
Handbook of Retinal OCT: Optical Coherence Tomography

Handbook of Robotic and Image-Guided Surgery

Featured Books



Pediatric Hematology & Oncology Secrets



Current Surgical Therapy

فیلتر کردن نتایج جستجو بر اساس: تخصص ها

کتاب های ویژه



مرور چند رسانه ای ها

Browse Tools

Saved Searches

Search History

## Browse Multimedia

Filter By:

X Clear all

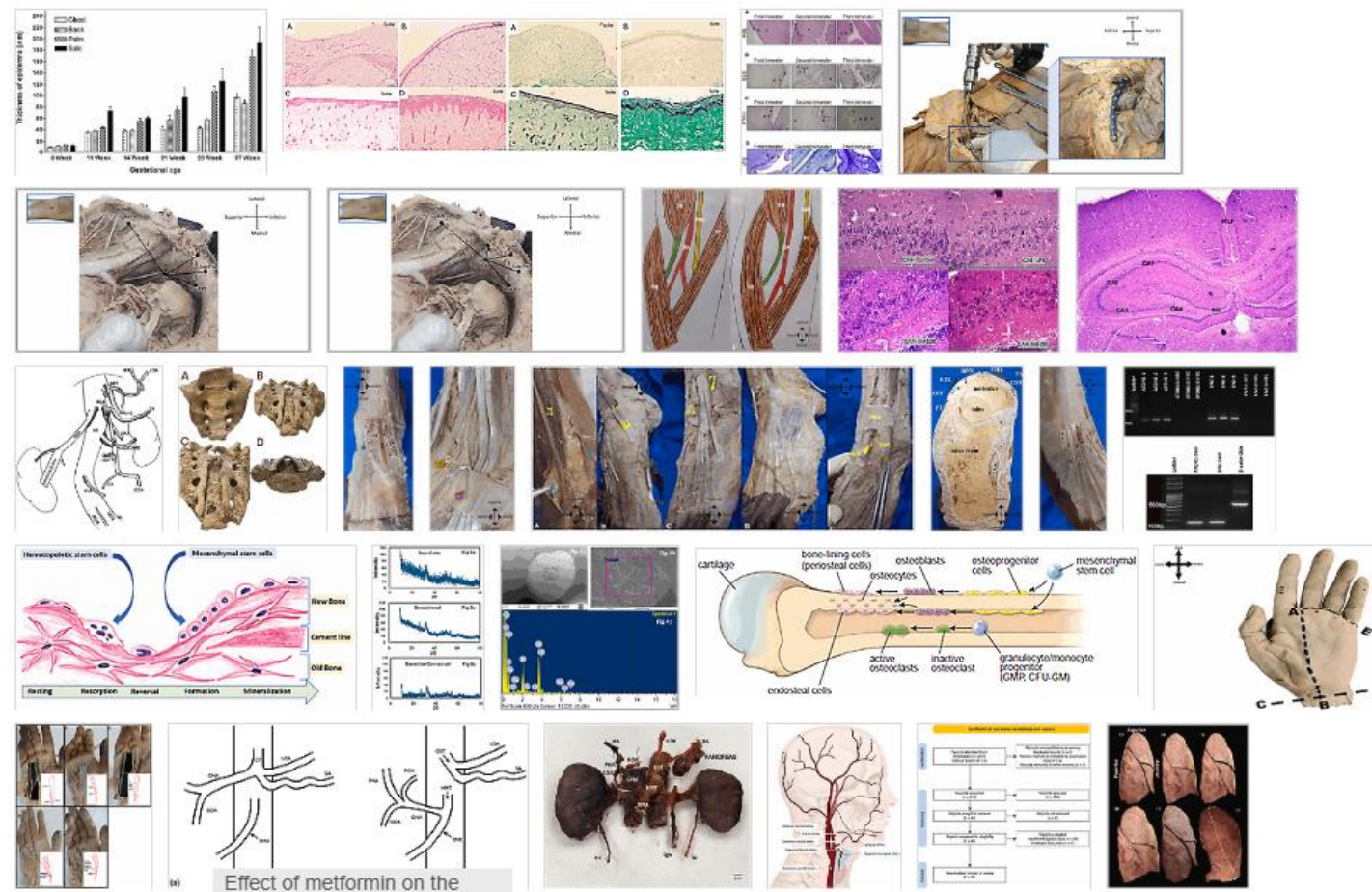
Specialties

ABCDEFGHIJKLMNO  
PQRSTUVWXYZ#

- Anatomy 25852
- Adult primary care 19
- Advanced Basic Science 268847
- Advanced Practice Nursing 1399
- Allergy and Immunology 257411
- Anatomy and Physiology 280
- Anesthesia 66993
- Anesthesia & Perioperative Care 2

Media Type

- Images 25236
- Videos 616
- Collapse Specialties
- Subscribed Content



فیلتر کردن نتایج جستجو بر اساس: تخصص و نوع چند رسانه ای





با کتابداران  
بروز باشید

☆ سپاس از توجه شما ☆

---

وب سایت کتابخانه بیمارستان امین

<https://centlib.mui.ac.ir/fa/amin/menu>

وب سایت کتابخانه مرکزی دانشگاه علوم پزشکی اصفهان

<https://centlib.mui.ac.ir/>